

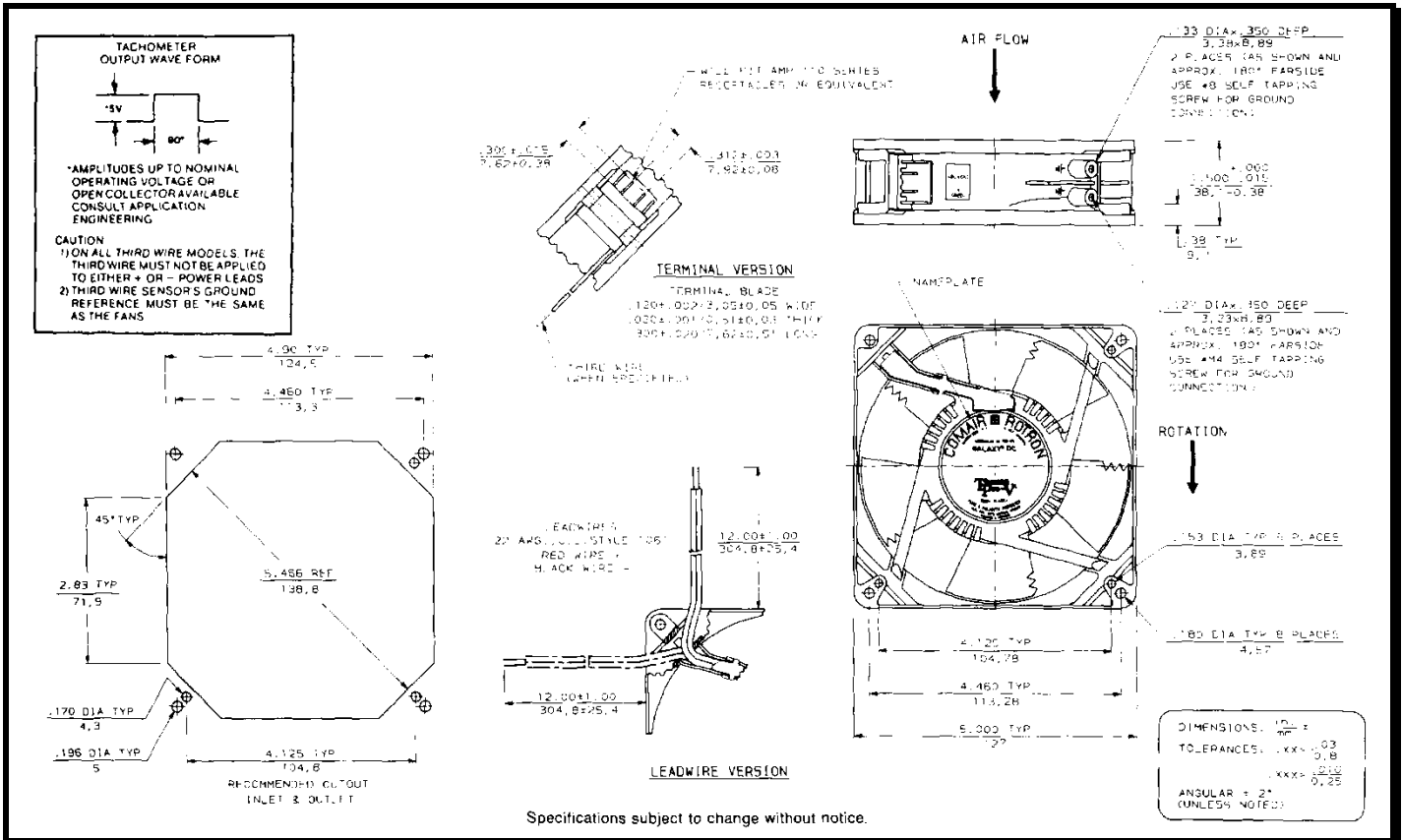
SPECIFICATIONS

Model Number: GL24B7
Part Number: 19031636A

Version: 01
Jan 18, 2018



Mechanical Drawing:



Motor:

Nominal Voltage	= 24 vdc
Operating Voltage Range	= 12 - 28 vdc
Nominal Running Current	= 0.630 amps
Locked Rotor Current	= 1.350 amps
Running Power	= 15.1 watts
Average Speed	= 3300 RPM
Bearings	= Ball
Air Flow	= 150 CFM
Acoustic	= 53.6 dBA

Construction:

Venturi: Die cast zinc alloy, painted black.
 Propeller: Plastic, Black, UL 94V-0.

Life Expectancy:

This fan is designed for continuous duty life of 60,000 hours at 70°C.

Agency Certifications:

UL, CUL, CE

Additional Features:

Brushless DC Motor
 Locked Rotor Protection
 Automatic Restart Capability
 Reverse Polarity Protected
 Operating Temperature: -10°C to 70°C
 Storage Temperature: -40°C to 85°C

Tachometer:

Output:	5vdc TTL
I _c :	5mA Typical
Isolated:	No
Pulses per Revolution:	2

Termination:

12" Lead wires, UL 1061, 22 AWG
 Red - Power (+)
 Black - Ground (-)
 Blue/White - Tachometer (Output)

PQ Curve:

